

CERTIFICATE OF LOCATION OF GOVERNMENT CORNER

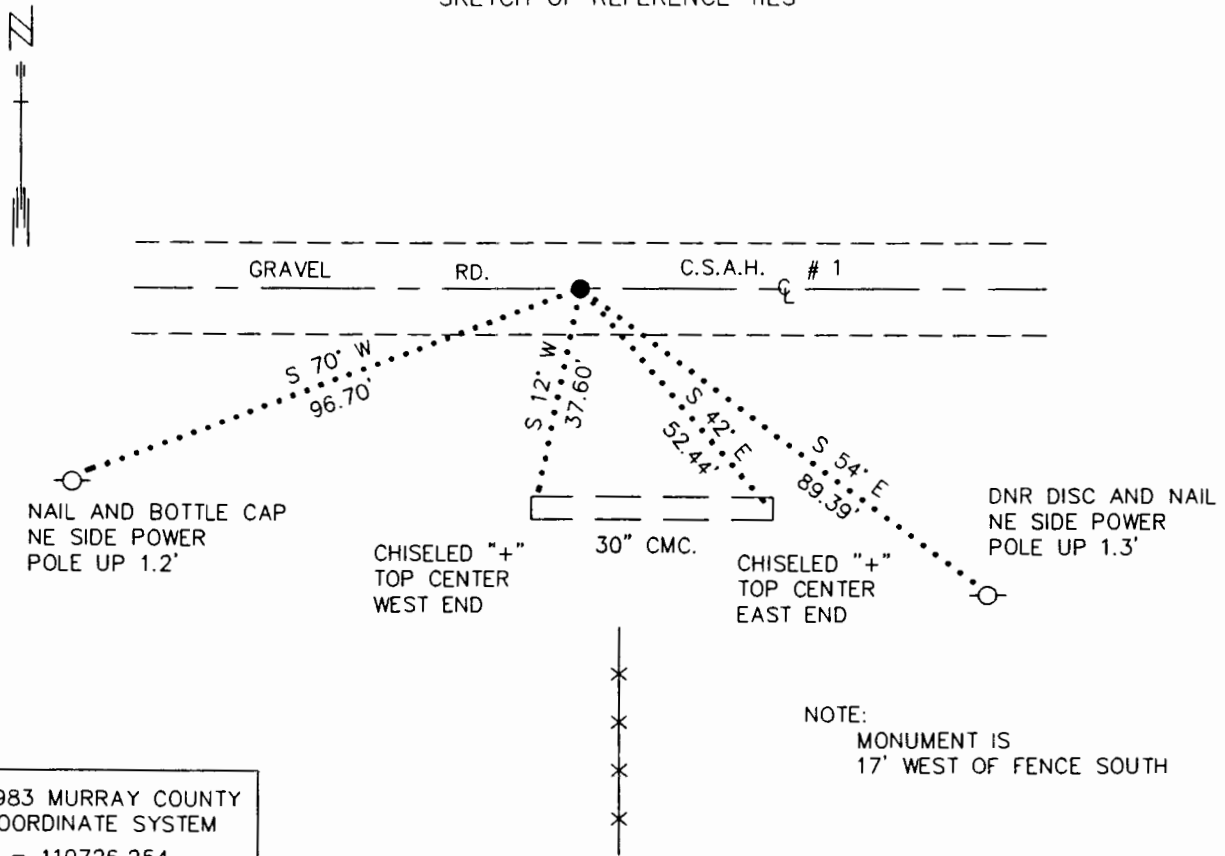
NORTH QUARTER Corner of Section 27, Township 105 N., Range 42 W., 5 th P.M.

STATE OF MINNESOTA, County of MURRAY

At the corner location shown on the sketch:

- On 8/20/92 found a 3/4" X 19" REBAR, DOWN 0.3'
DATE
- left monument as found, lowered monument, removed monument (explain)
- On 9/14/92 Placed a 3/4" X 24" REBAR WITH ALUMINUM CAP
DATE
STAMPED "MN DNR SURVEY MARKER", DOWN 0.5'

SKETCH OF REFERENCE TIES



1983 MURRAY COUNTY
COORDINATE SYSTEM
N = 110726.254
E = 471698.889

Statement of evidence relative to this corner location is on back of page. 10/7/92
WMA01187.00.00.01

I hereby certify that this document and the data contained herein was prepared by me or under my direct supervision.

Lowell R. Pomeroy 10-26-92
SIGNATURE DATE

Registration No. 17005
 Land Surveyor, Professional Engineer
 County Surveyor, County Engineer

OFFICE OF THE COUNTY RECORDER
County of MURRAY

I hereby certify that this document was filed in the Co. recorders office at _____ M. on the _____ day of OCT 27 1992 A.D., 19____
County Recorder *James V. Johnson*
By _____, Deputy
DOCUMENT NO. _____